



MST

**Company
profile**

- 
- 1. Company Overview**
 - 2. History**
 - 3. Main Products**
 - 4. Welding Personnel**
 - 5. Facility Status**
 - 6. Working Environment**
 - 7. Quality Management**

CONTENTS



01 Company Overview

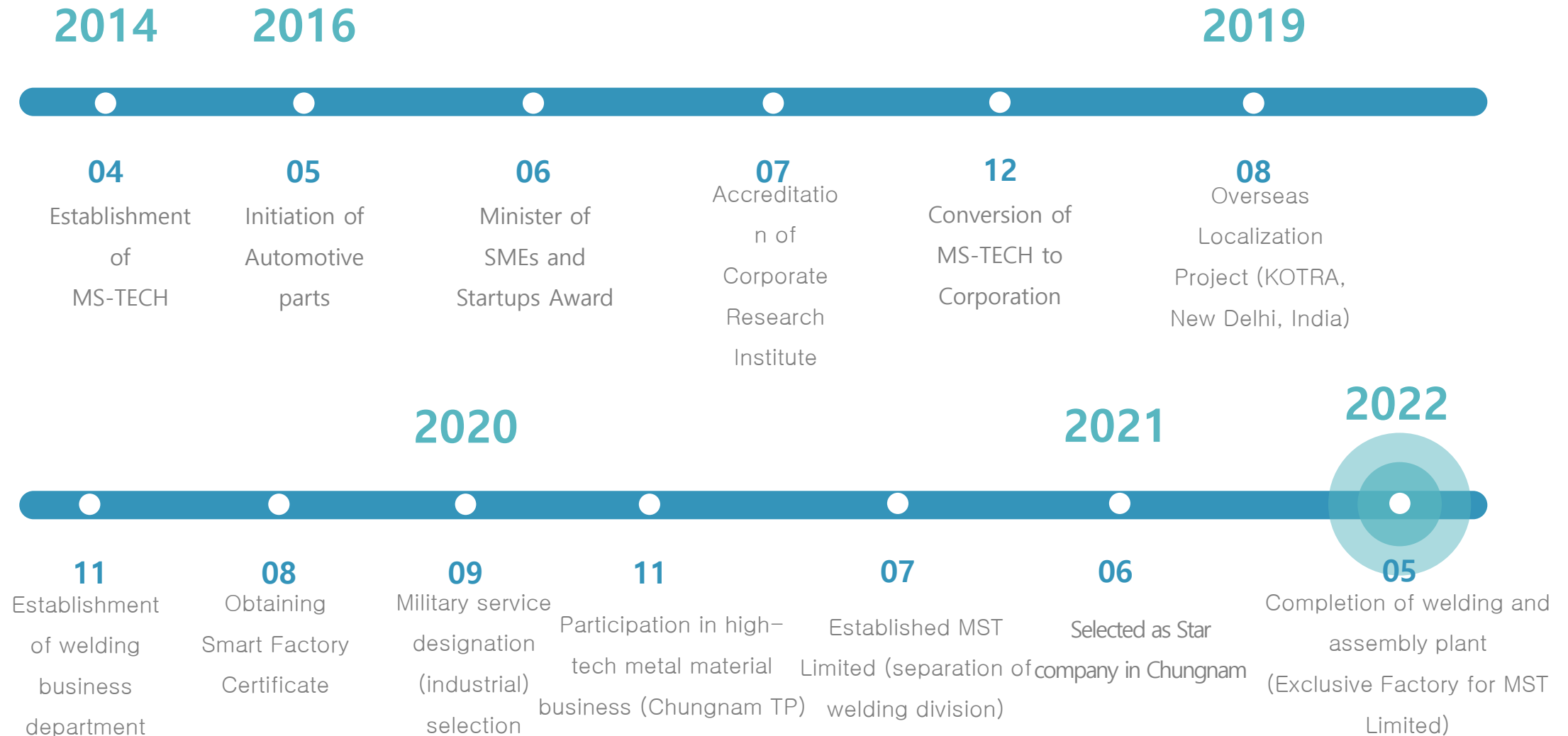
Company Overview

Company Name	MST.LLC	Established	2021.07.01
CEO	Jong Ho Baeg	BRN	257-86-02272
Tel.	+82-41-588-0991	Email.	chanhobeag@daum.net
Fax.	+82-41-588-0992	Website	http://www.mstsave.com
Location	176, Daehong 3-gil, Seonghwan-eup, Seobuk-gu, Cheonan-si, Chungcheongnam-do		
Type of Business	Manufacture	Category of Business	semiconductor manufacturing machinery manufacturing
Capital	600M Won(KRW)	Sales	8060M Won(KRW)
Personnel	45	Welding Dep.	11



02 History

History



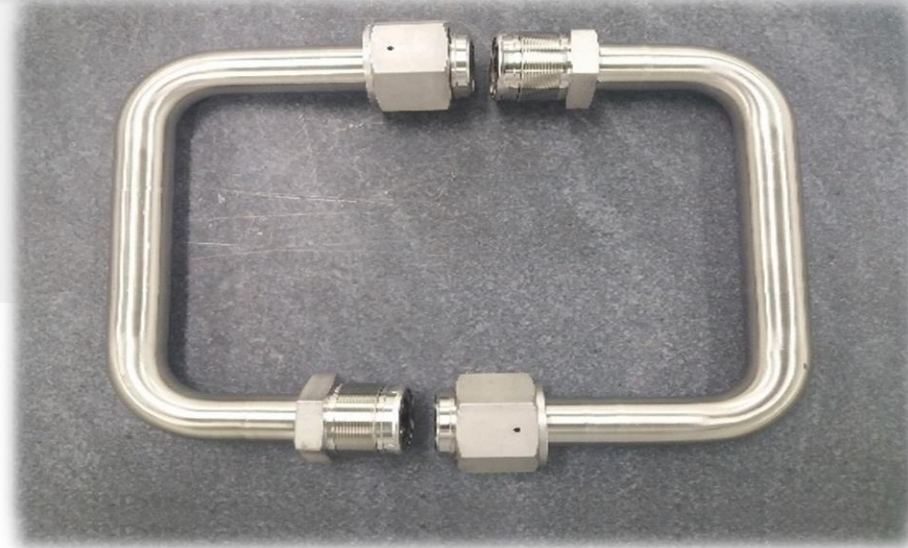
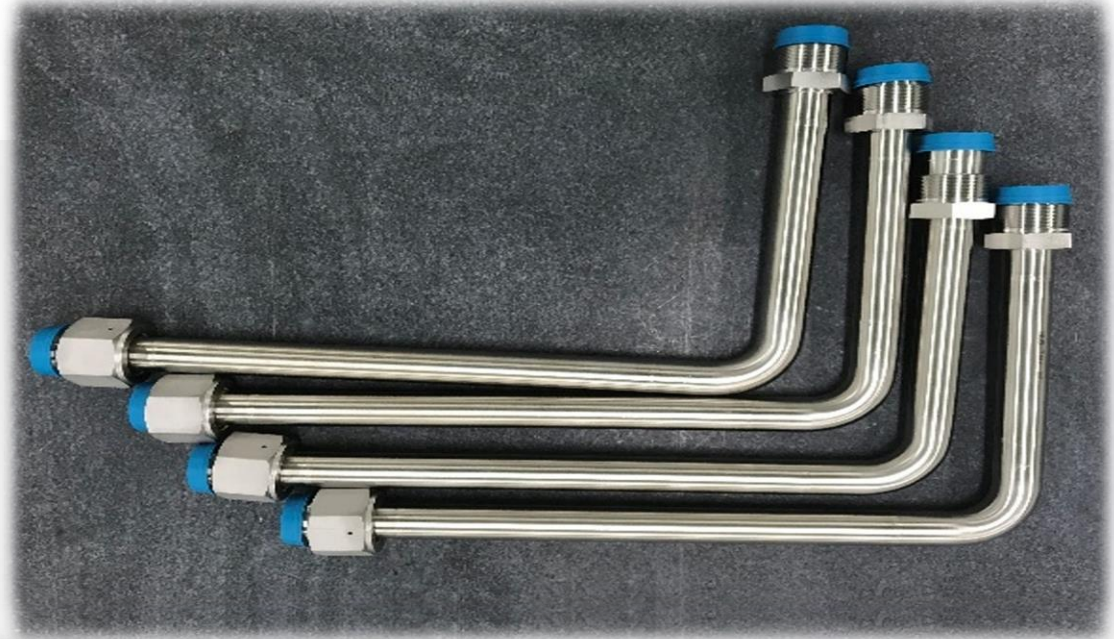
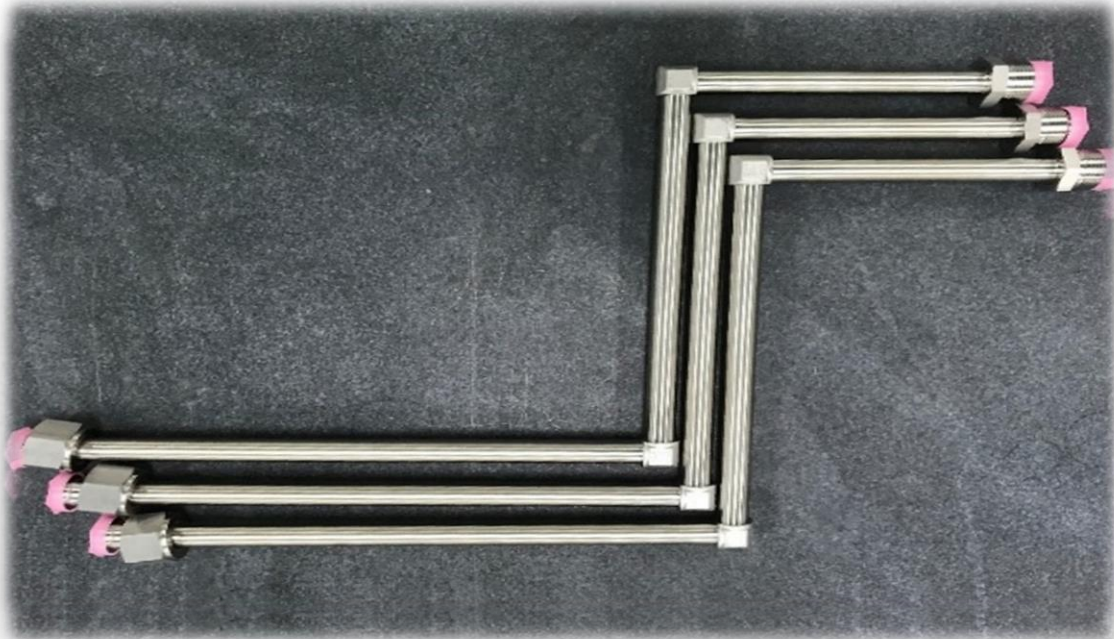
03 Main Products

1. VACUUM LINE
2. GAS LINE
3. STAINLESS STEEL PIPE
4. ALUMINUM TUBE & STRUCTURAL
5. STRUCTURAL PIPE
6. SEMICONDUCTOR COMPONENTS

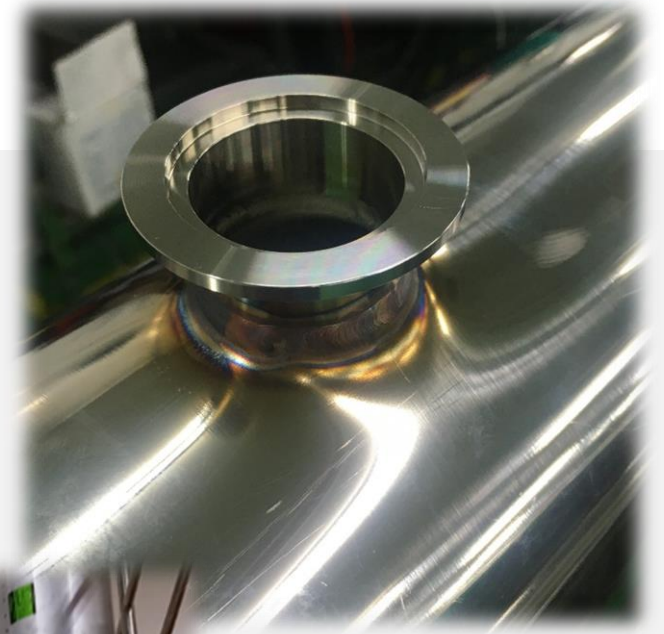
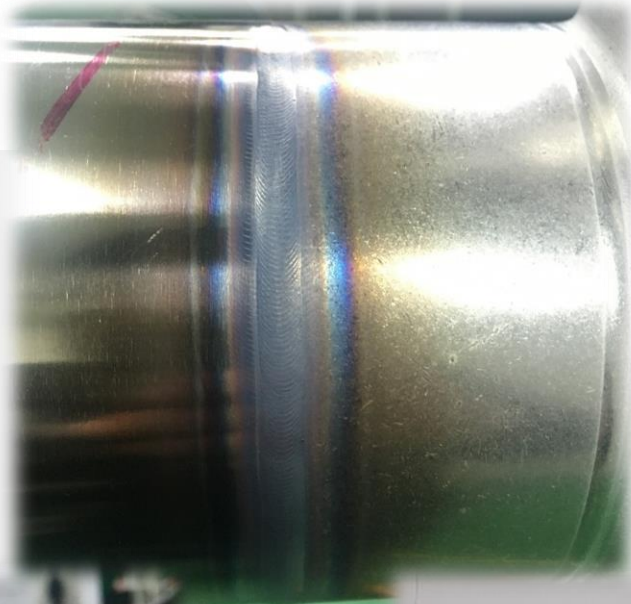
1. VACUUM LINE



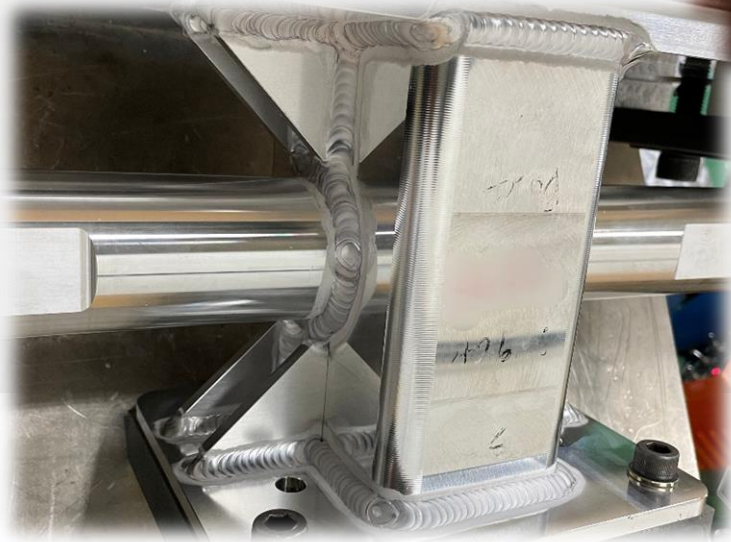
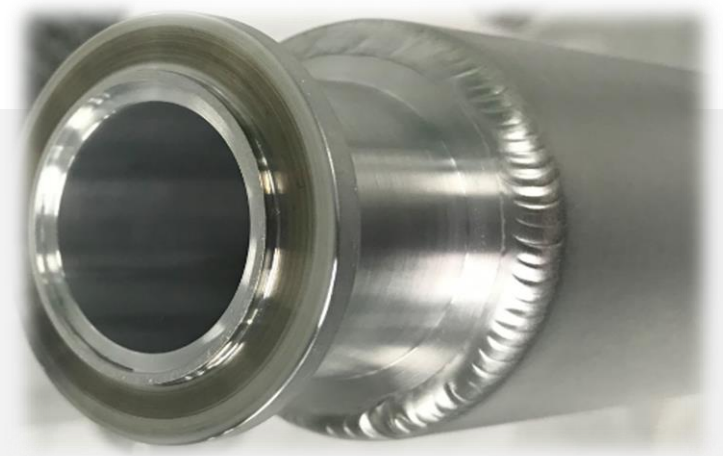
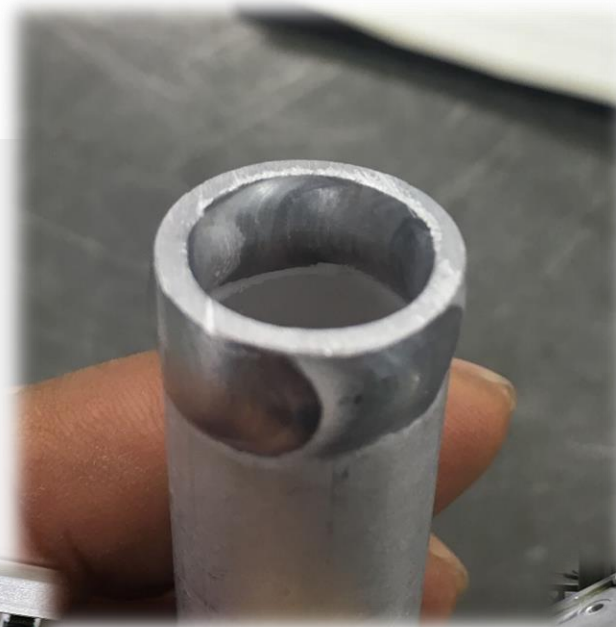
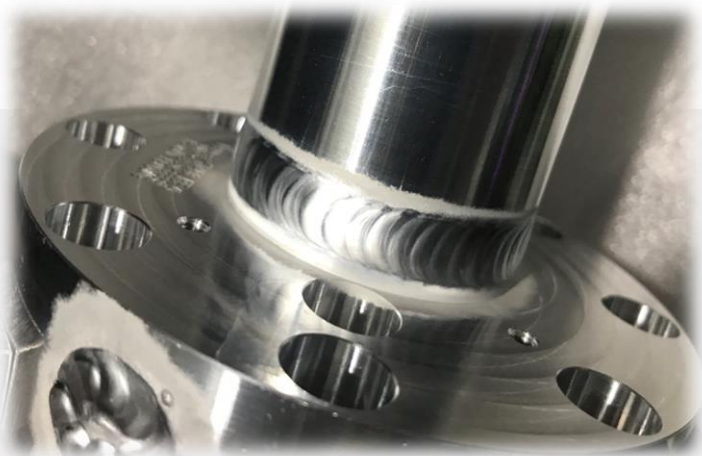
2. GAS LINE



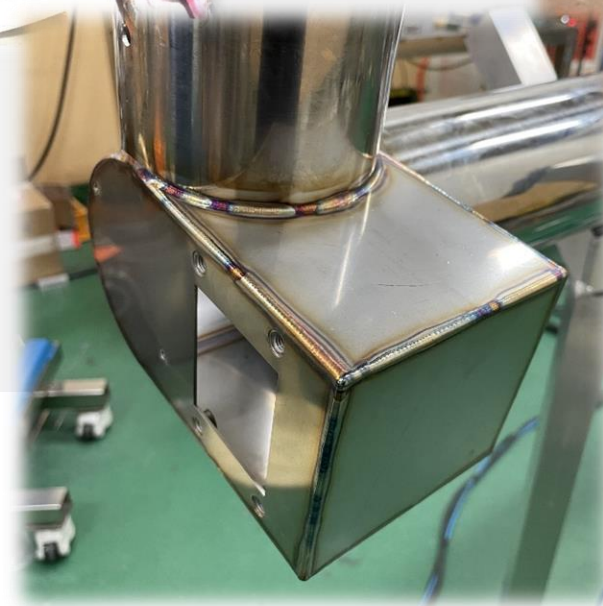
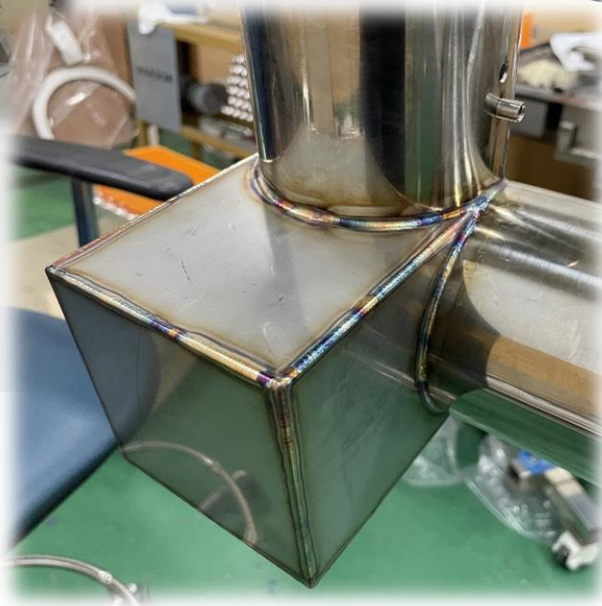
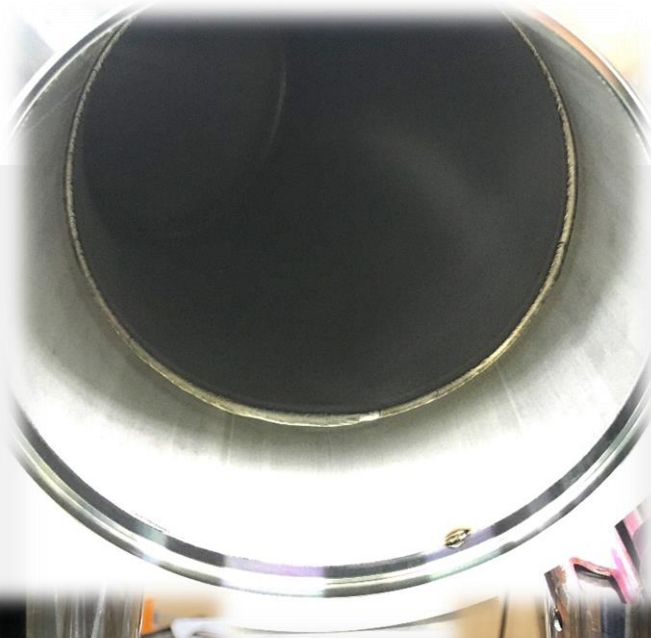
3. STAINLESS STEEL PIPE



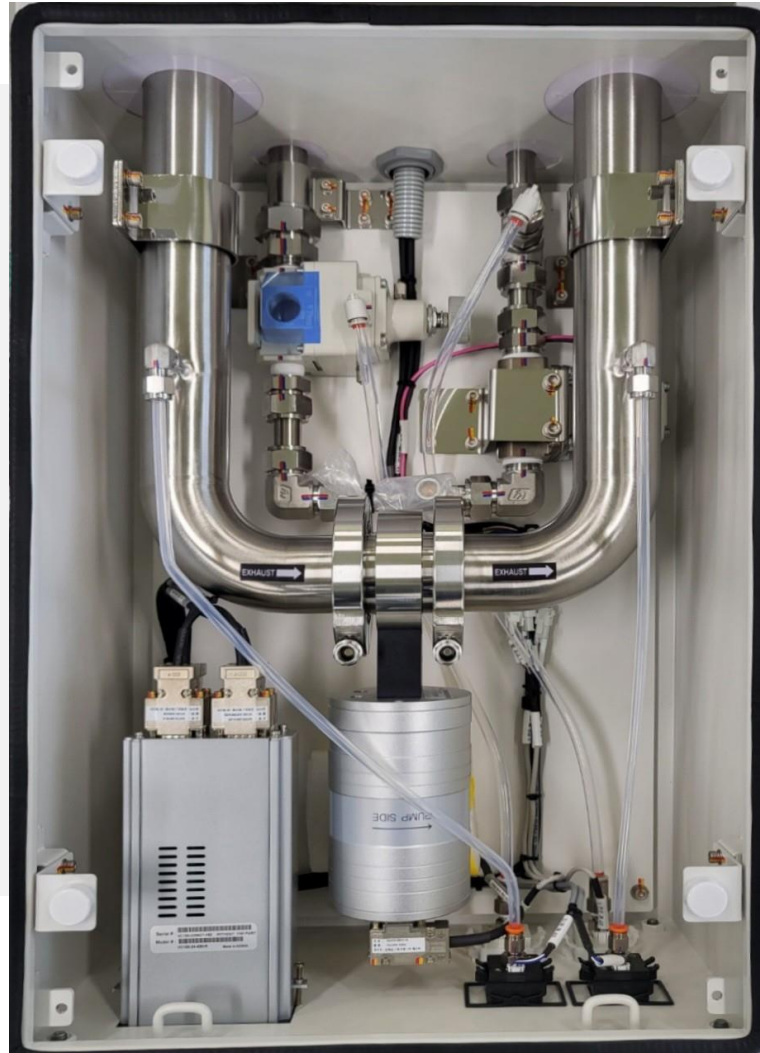
4. ALUMINUM TUBE & STRUCTURAL



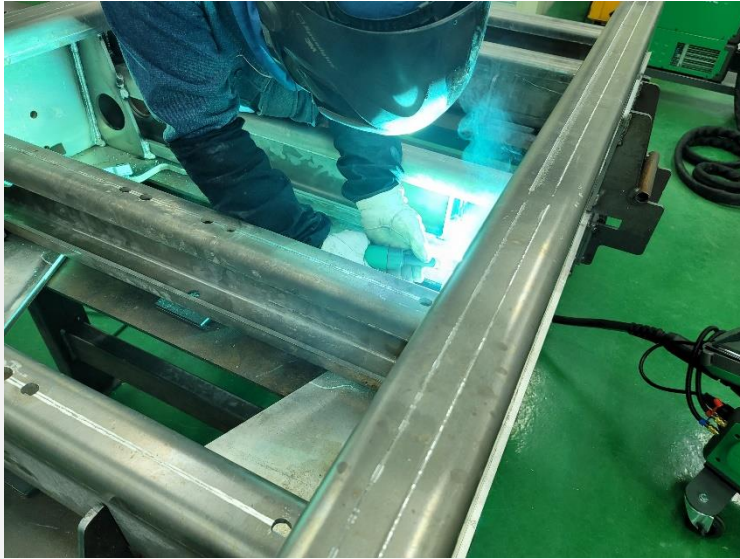
5. STRUCTURAL PIPE & SEMECONDUCTOR COMPONENTS



6. N₂ System



7. Aluminum MIG Welding



Workable Range

Material		A / B	Thickness	Purpose
Stainless Steel	304, 304L 316, 316L Duplex	~ 100A / 4B	0.1~5T	Vacuum Line Gas Line Water Line
Aluminum	50XX 60XX	N/A	0.5~20T	Gas Line Semiconductor Structure Vacuum Chamber

04

Welding Personnel

Welding Personnel

Rank	Mane	Year	Welding Skill	Career
GM	Kim, TH	15y	Auto / Manual weld [Gas, Vacuum, Aluminum]	Hanwha Defense, A-1K
DGM	Kim, IC	9y	Auto / Manual weld [Gas, Vacuum]	Korea Nitto Optical
M	Kim, SC	8y	Manual weld / Pipe Fitter [Gas, Vacuum]	Samsung Semiconductor
AM	Beag, KH	3y	Manual weld [Vacuum]	MST
SC	Kim, KJ	2y	Manual weld [Vacuum]	MST
SC	Kim, GC	2y	Manual weld [Vacuum]	MST



05 Facility Status

Facility Status-1



Maker : **Joyoung**
Model : **WD-350PN II**
Output Current: **350A**
System Q'ty : **5 Set**
DC and Thin Tube Welding Capability.
Especially Good to STS Thin Tube Welding.



Maker : **Worldwel**
Model : **500PA**
Output Current : **500A**
System Q'ty : **1 Set**
DC/AC and Thin Tube Welding Capability.
Especially Good to STS & Aluminum Thin Tube Welding.



Maker : **MIGATRONIC**
Model : **SELECT400**
Output Current : **400A**
System Q'ty : **1 Set**
DC/AC and Thin Tube Welding Capability.
Especially Good to Aluminum MIG Welding.

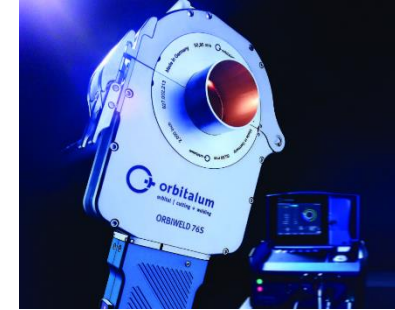
Facility Status-2



Maker :AMI
 Model :217WDR
 Output Current:1~150A
 System Q'ty :2 Set
 Orbital fusion weld heads and is capable of welding tube and thin wall pipe for GTAW



Maker :ORBIMAT
 Model :180SW
 Output Current:5~180A
 System Q'ty :1 Set
 Orbital fusion weld heads and is capable of welding tube and thin wall pipe for GTAW



Maker :ORBIMAT
 Model :OW12(MICRO)
 Range :1/8"~1/2"
 System Q'ty :1 Set
 Model :OW76S
 Range :1/2"~3"
 System Q'ty :1 Set

Facility Status-3



Maker	:Rcutter
Model	:End Mill Tube Cutter
Max. Load	:1/8"~1", 2.24mm~25.4mm:0~5A
Frequency	:50~60Hz
System Q'ty	:1 Set




Maker	:Fluidmachine
Model	:YCT-100
Max. Load	:100Kg/H, 50Kg/V
Speed	:0~5A
System Q'ty	:4 Set



Maker	:AXXAIR
Model	:CC122 4"-1ea, 6"-1ea
Base Beat	:Ø24~Ø120mm:0~5A
Detail	:Verticality<0.25mm
System Q'ty	:2 Set



Maker	:ADIXEN
Model	:ASM-182TD+
Standard	:10(-12)torr.l/s (mbar.l/s)
Speed	:N/A
System Q'ty	:1 Set



06 Working Environment

Work Environment – Welding & Clean Room

Welding Room1

Workspaces: 396m²

Loadspaces: 264m²

Welding Room2

Workspaces: 260m²

Clean Room1,2

Workspaces: 1120m²

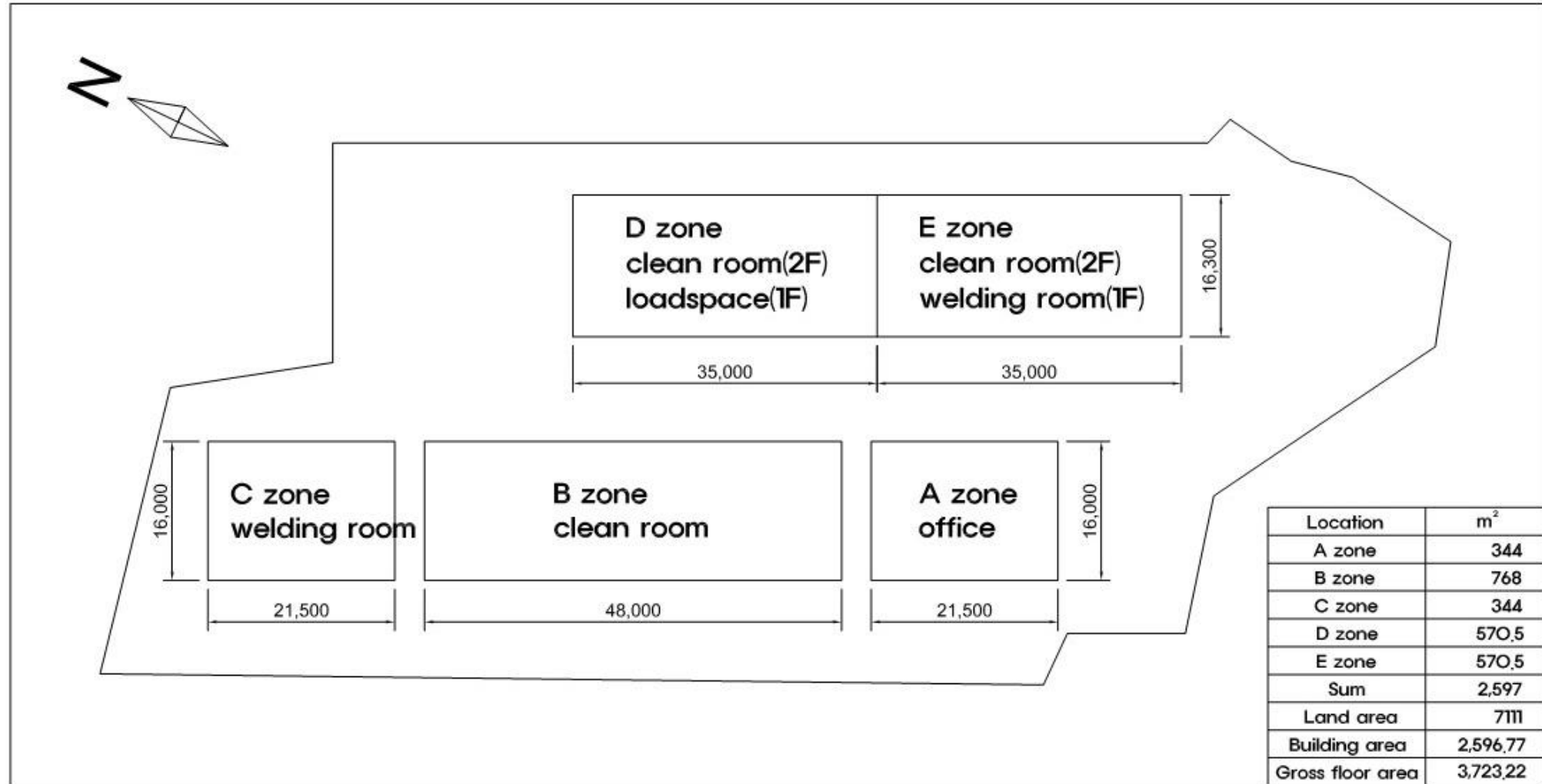
Loadspaces :264m²

Clean Room3

Workspaces:656m²



Working Environment – Architectural Chart of Factory





07 Quality Management

Quality management - CWI(certified welding inspector)





Thanks!



Company Number

+82-41-588-0991



E-mail

chanhobeag@daum.net



Address

176, Daehong 3-gil, Seonghwan-eup, Seobuk-gu, Cheonan-si, Chungcheongnam-do, Republic of Korea



Site link

<http://www.mstsave.com>